

ULTRA-THIN LED LIGHT PANEL

Allow Bitro to shine new light on your advertising methods with Bitro's Ultra-thin light panel. The modular design light box, which emanates with rich color and uniform brightness, can be customized for a wide variety of applications. In addition, its user-friendly design features bezels that snaps open forward for easy picture replacement, rounded corners for optimum safety, and a frame as thin as 0.86" in width for slim display. Begin enchancing your ads now by implementing this radiant light panel!

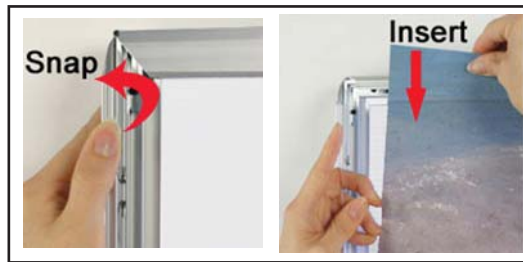


LED LIGHT PANEL

ULTRA Thin
ENERGY Saving
UNIFORM brightness



as thin as 0.86" in thickness



Bezel snaps open for easy picture replacement



Round corners for safety

ULTRATHIN LED LIGHT PANEL - LGP TYPE



Best used with back-lit media printing

LED light is emitted from the sides of the panel (longer side for optimum brightness) which then is evenly distributed to the face by specially designed Light Guided Panel (LGP) for uniformly illuminated surface.

All BITRO LED products are manufactured in Korea and are designed with durability and longevity in mind.



Features

- * Great for advertisement, tradeshow, POP, menu board.
- * Ultra slim design looks great on any wall
- * Uniform Illumination with no hot spots
- * Low energy consumption: over 40% energy savings over traditional light boxes
- * Front load hatch frame makes changing graphics easy and fast
- * Environmentally Friendly

Standard Sizes

Model #	Size (L x W)	Frame Color
LGP18x24S	18" x 24"	Silver
LGP22x28S	22" x 28"	Silver
LGP22X32S	22" X 32"	Silver
LGP24x36S	24" x 36"	Silver

Also available in black frame